



Volcanic Studies at Katmai



NATIONAL ACADEMY PRESS

The National Academy Press was created by the National Academy of Sciences to publish the reports issued by the Academy and the National Academy of Engineering, the Institute of Medicine, and the National Research Council, all operating under the charter granted to the National Academy of Sciences by the Congress of the United States.

Volcanic Studies at Katmai

Panel on Volcanic Studies at Katmai
U.S. Geodynamics Committee
Board on Earth Sciences and Resources
Commission on Physical Sciences, Mathematics, and Resources
National Research Council

NATIONAL ACADEMY PRESS
Washington, D.C. 1989

NOTICE: The project that is the subject of this report was approved by the Governing Board of the National Research Council, whose members are drawn from the councils of the National Academy of Sciences, the National Academy of Engineering, and the Institute of Medicine. The members of the committee responsible for the report were chosen for their special competences and with regard for appropriate balance.

This report has been reviewed by a group other than the authors according to procedures approved by a Report Review Committee consisting of members of the National Academy of Sciences, the National Academy of Engineering, and the Institute of Medicine.

The National Academy of Sciences is a private, nonprofit, self-perpetuating society of distinguished scholars engaged in scientific and engineering research, dedicated to the furtherance of science and technology and to their use for the general welfare. Upon the authority of the charter granted to it by the Congress in 1863, the Academy has a mandate that requires it to advise the federal government on scientific and technical matters. Dr. Frank Press is president of the National Academy of Sciences.

The National Academy of Engineering was established in 1964, under the charter of the National Academy of Sciences, as a parallel organization of outstanding engineers. It is autonomous in its administration and in the selection of its members, sharing with the National Academy of Sciences the responsibility for advising the federal government. The National Academy of Engineering also sponsors engineering programs aimed at meeting national needs, encourages education and research, and recognizes the superior achievements of engineers. Dr. Robert M. White is president of the National Academy of Engineering.

The Institute of Medicine was established in 1970 by the National Academy of Sciences to secure the services of eminent members of appropriate professions in the examination of policy matters pertaining to the health of the public. The Institute acts under the responsibility given to the National Academy of Sciences by its congressional charter to be an adviser to the federal government and, upon its own initiative, to identify issues of medical care, research, and education. Dr. Samuel O. Thier is president of the Institute of Medicine.

The National Research Council was organized by the National Academy of Sciences in 1916 to associate the broad community of science and technology with the Academy's purposes of furthering knowledge and advising the federal government. Functioning in accordance with general policies determined by the Academy, the Council has become the principal operating agency of both the National Academy of Sciences and the National Academy of Engineering in providing services to the government, the public, and the scientific and engineering communities. The Council is administered jointly by both Academies and the Institute of Medicine. Dr. Frank Press and Dr. Robert M. White are chairman and vice chairman, respectively, of the National Research Council.

Support for this project was provided by the Department of Energy, the National Science Foundation, and the U.S. Geological Survey.

Available from:
U.S. Geodynamics Committee
National Research Council
2101 Constitution Ave. N.W.
Washington, D.C. 20418

Printed in the United States of America

PANEL ON VOLCANIC STUDIES AT KATMAI

ELBURT F. OSBORN, Pennsylvania State University, *Chairman*

FRANCIS R. BOYD, Geophysical Laboratory, Carnegie Institution of Washington

IAN S. CARMICHAEL, University of California, Berkeley

WOLFGANG E. ELSTON, University of New Mexico

RICHARD S. FISKE, Smithsonian Institution

ALEXANDER R. McBIRNEY, University of Oregon

I. SELWYN SACKS, Department of Terrestrial Magnetism, Carnegie Institution of Washington

Staff Consultant

WILLIAM E. BENSON

U.S. GEODYNAMICS COMMITTEE

FRANK M. RICHTER, University of Chicago, *Chairman*
DONALD J. DePAOLO, University of California, Berkeley
BRADFORD H. HAGER, California Institute of Technology
WILLIAM J. HINZE, Purdue University
DAVID L. JONES, University of California, Berkeley
LEIGH H. ROYDEN, Massachusetts Institute of Technology
ROB VAN DER VOO, University of Michigan
PETER R. VAIL, Rice University
E-AN ZEN, U.S. Geological Survey

Ex officio:

ADAM M. DZIEWONSKI (Bureau Member, Inter-Union Commission on the
Lithosphere)

Staff

PEMBROKE J. HART

BOARD ON EARTH SCIENCES AND RESOURCES

WILLIAM L. FISHER, University of Texas, Austin, *Co-Chairman*
BRIAN J. SKINNER, Yale University, *Co-Chairman*
SAMUEL S. ADAMS, Colorado School of Mines
KEIITI AKI, University of Southern California
ALBERT W. BALLY, Rice University
JAMES R. BAROFFIO, Chevron USA, Inc.
SANDRA L. BLACKSTONE, University of Denver
DONALD J. DePAOLO, University of California, Berkeley
GORDON P. EATON, Iowa State University
W. GARY ERNST, Stanford University
ROBERT N. GINSBURG, University of Miami
ALEXANDER F.H. GOETZ, University of Colorado
PRISCILLA C.P. GREW, Minnesota Geological Survey
PERRY R. HAGENSTEIN, Resource Issues, Inc.
HARRISON C. JAMISON, Atlantic Richfield Exploration Company (retired)
THOMAS H. JORDAN, Massachusetts Institute of Technology
CHARLES J. MANKIN, University of Oklahoma
CAREL OTTE, JR., Unocal Corporation (retired)
FRANK M. RICHTER, University of Chicago
J.J. SIMMONS III, Interstate Commerce Commission
STEVEN M. STANLEY, Johns Hopkins University
IRVIN L. WHITE, New York State Energy Research and Development Authority

ROBERT S. LONG, Staff Director
BETTY C. GUYOT, Staff Associate

COMMISSION ON PHYSICAL SCIENCES, MATHEMATICS, AND RESOURCES

NORMAN HACKERMAN, Robert A. Welch Foundation, *Chairman*
ROBERT C. BEARDSLEY, Woods Hole Oceanographic Institution
B. CLARK BURCHFIEL, Massachusetts Institute of Technology
GEORGE F. CARRIER, Harvard University
RALPH J. CICERONE, University of California, Irvine
HERBERT D. DOAN, The Dow Chemical Company (retired)
PETER S. EAGLESON, Massachusetts Institute of Technology
DEAN E. EASTMAN, IBM T.J. Watson Research Center
MARYE ANNE FOX, University of Texas
GERHART FRIEDLANDER, Brookhaven National Laboratory
LAWRENCE W. FUNKHOUSER, Chevron Corporation (retired)
PHILLIP A. GRIFFITHS, Duke University
NEAL F. LANE, Rice University
CHRISTOPHER F. MCKEE, University of California, Berkeley
RICHARD S. NICHOLSON, American Association for the Advancement of Science
JACK E. OLIVER, Cornell University
JEREMIAH P. OSTRIKER, Princeton University Observatory
PHILIP A. PALMER, E.I. du Pont de Nemours & Company
FRANK L. PARKER, Vanderbilt University
DENIS J. PRAGER, MacArthur Foundation
DAVID M. RAUP, University of Chicago
ROY F. SCHWITTERS, Superconducting Super Collider Laboratory
LARRY L. SMARR, University of Illinois, Urbana-Champaign
KARL K. TUREKIAN, Yale University

MYRON F. UMAN, Acting Executive Director
ROBERT M. SIMON, Acting Associate Executive Director

1. INTRODUCTION

The Continental Scientific Drilling Program (CSDP) is a national effort supported by the Department of Energy, the U.S. Geological Survey, and the National Science Foundation. Coordination is accomplished through the Interagency Coordinating Group, which comprises representatives of those agencies. Projects can be proposed from within or without the sponsoring agencies and from within or without the federal government.

One of the projects proposed for the CSDP consists of drilling a series of holes in Katmai National Park in Alaska to give a third dimension to the model of the 1912 eruption of Novarupta, and to investigate the processes of explosive volcanism and hydrothermal transport of metals (Eichelberger et al., 1988).

The proposal for research drilling at Katmai states that "the size, youth, elevated temperature, and simplicity of the Novarupta vent make it a truly unique scientific target." The National Park Service (NPS), which has jurisdiction, is sympathetic to aims of the study. However, because the area is both a National Park and a Wilderness Area (and therefore a sensitive area in which to drill), NPS wishes to know whether Katmai is indeed uniquely suited to the research, and has asked the Interagency Coordinating Group to support an independent assessment of this claim. NPS suggested the National Academy of Sciences as an appropriate organization to conduct the assessment.

In response, the National Research Council—the working arm of the Academy—established, under the aegis of its U.S. Geodynamics Committee, a panel whose specific charge states: "The proposed investigation at Katmai has been extensively reviewed for scientific merit by the three sponsoring and participating agencies. Thus, the scientific merit of the proposed drilling at Katmai is not at issue. The panel will review the proposal for scientific drilling at Katmai and prepare a short report addressing the specific question of the degree to which it is essential that the drilling be conducted at Katmai as opposed to volcanic areas elsewhere in the world."

In addressing its charge, the panel has drawn on the personal knowledge of its members, a selective review of the literature, a search of the data bank of the Smithsonian Institution, and personal contacts with other volcanologists, notably from Hawaii, Japan, England, and France.

Because aspects such as scientific merit, cost, and environmental considerations are being reviewed by other groups, they are outside this panel's purview. That the panel does not comment on them implies neither a favorable nor an unfavorable opinion of the project as a whole.

2. KATMAI VOLCANO

General Features

On June 6, 1912, the Alaskan Peninsula was rocked by a large explosive eruption comprising about 15 km^3 of magma that expanded to twice that volume, producing 15 km^3 of airborne ash plus a like amount in an ash-flow sheet. This sheet filled two existing valleys up to 200 m deep and created what is now the Valley of Ten Thousand Smokes (Figure 1). The vent area, named Novarupta, was at a distance of 5 to 17 km from four pre-existing volcanic edifices and was blasted through virtually unaltered marine sedimentary rocks. The magma chamber that fed the eruptions seems to have been some 10 km distant under Mount Katmai, whose summit collapsed after the eruption to form a caldera 3 km in diameter. Novarupta itself subsided along concentric fractures; it is uncertain whether this moderate subsidence was caused wholly by compaction (Hildreth and Fierstein, 1986) or whether some collapse may have been involved. The eruptive sequence ended with the extrusion of Novarupta Dome and the intrusion of a presumed laccolithic body to form a domelike feature known as the Turtle (Figure 2).

Chemically, the 1912 eruptive products ranged from rhyolite to andesites, with rhyolite and dacite predominating.

Advantages of Katmai

The general objectives of the proposal are to test the three-dimensional models for intrusion, eruption, cooling, alteration, and transport of metals in a well-preserved vent and ash flow (Figure 3). The attractive features of Katmai for the study are well-stated in the proposal. We summarize them as follows:

1. **Size.** The 15 km^3 of erupted magma makes the 1912 event one of the larger silicic eruptions of historic times. It is large enough to be catastrophic, but small enough to be typical of many explosive eruptions and also small enough to be studied by the proposed drilling. The ash flow is large enough to have a welded interior, probably the only recent flow in the world with welding.

2. **Youth.** A deposit the size of the Novarupta ash flow and vent almost certainly retains substantial residual heat after only 77 years, and retrograde hydrothermal alteration has not yet overprinted primary lithology.

3. **Simplicity.** The 1912 eruption was a single discrete event; Novarupta was blasted through previously unaltered Jurassic sedimentary rocks. Thus there is no overprinting of earlier volcanic events by successive episodes of eruption or hydrothermal alteration. Moreover, the country rock will be readily distinguishable from the 1912 volcanic rock in drill samples. Because there has been no major summit collapse at Novarupta, the structure of the vent area is relatively uncomplicated and could be more easily interpreted from drill cores.

4. **Shallowness.** Preliminary geophysical studies suggest that the vent bottoms between 1 and 2 km. Thus the various compositional components of the ash flow should have identifiable counterparts in the cores from the vent.

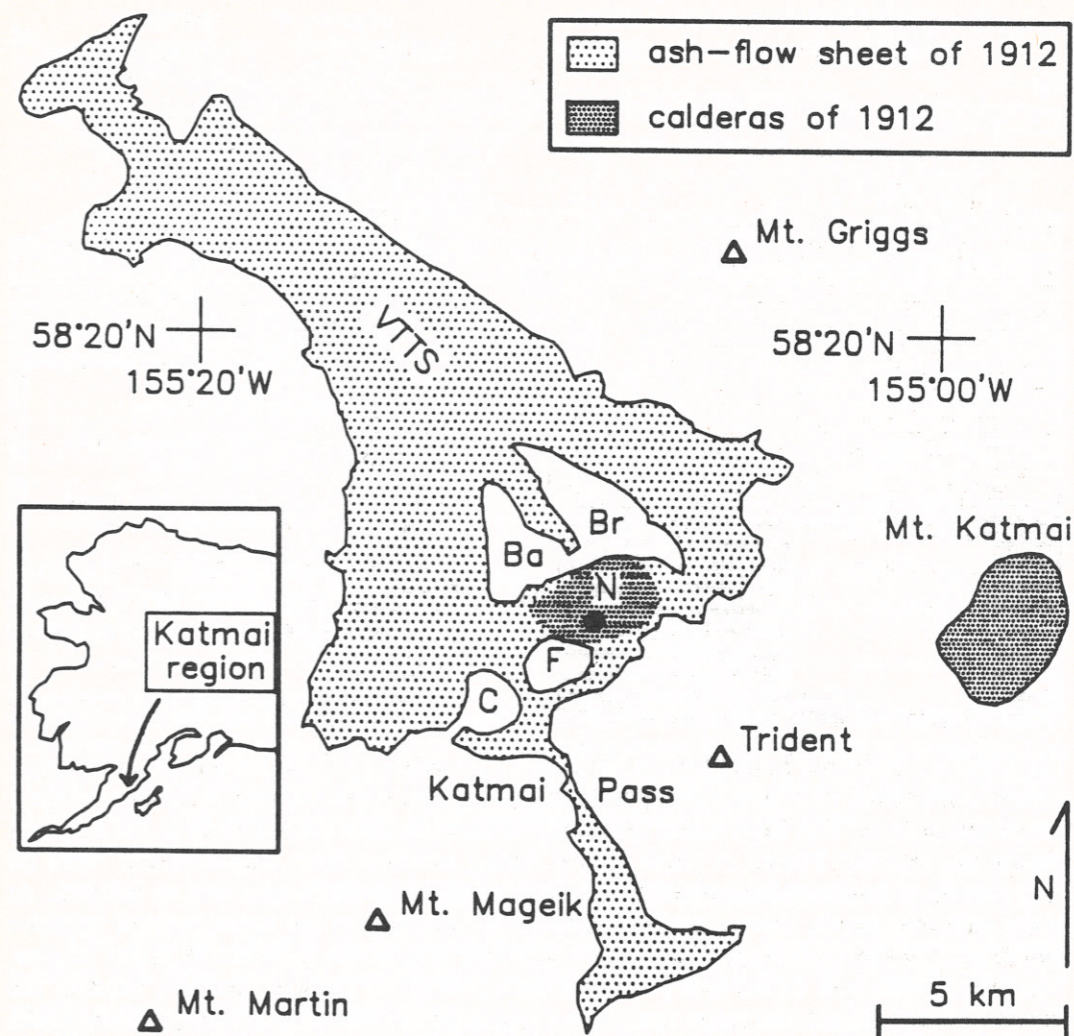


FIGURE 1 Map of the Valley of Ten Thousand Smokes, showing locations of the ash-flow sheet, Novarupta and Mount Katmai calderas, and neighboring volcanoes. Inset shows location. Abbreviations: Ba, Baked Mountain; Br, Broken Mountain; C, Mountain Cerberus; F, Falling Mountain; N, Novarupta. (After Hildreth, 1983; reproduced from Eichelberger et al., 1988.)

5. **Known Transport and Deposition of Metals.** That metals were being transported by hydrothermal processes at Katmai has been well documented by earlier workers (e.g., Zies 1929, Griggs 1918, and Fenner 1950). These processes are probably continuing, and the area has been neither degraded by erosion nor complicated by other events.

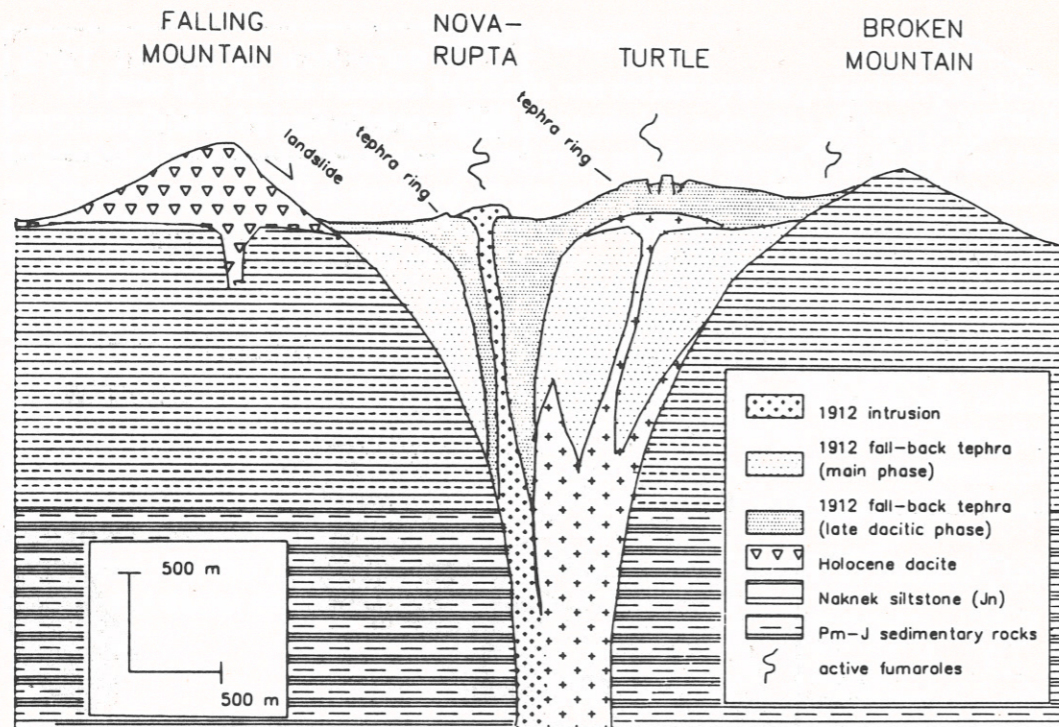


FIGURE 2 Preferred model for the 1912 vent. Consistent with this model, the lithic ejecta consist dominantly of Naknek Formation, indicating that the excavated volume is within 1 km of the surface. This large flared funnel is presumed to have formed early in the eruption during the rhyolitic Plinian A phase and/or during ash-flow sheet emplacement. Vent fill may consist of fluidized-bed material that never reached the surface as well as fallback. At some unknown depth, there must be a downward transition to the unfragmented intrusive equivalents of the pyroclastic units. The vent-filling tephra was intruded by intact magma, which fed Novarupta Dome and possibly a buried dome of shallow intrusion beneath the Turtle. Nested within the large vent, and containing the Novarupta feeder, is the much smaller vent for the late dacitic Plinian phase of the eruption. (After Eichelberger et al., 1988.)

Disadvantages of Katmai

Few things are perfect; no volcanic area is or will ever be ideal for every aspect of research. The less favorable aspects of Katmai are as follows:

1. Location of the Magma Chamber. The fact that Mount Katmai itself underwent a caldera-forming collapse while Novarupta remained almost intact strongly suggests that the magma reservoir is or was beneath Mount Katmai with a lateral feeder to Novarupta. Therefore the magma chamber itself is not a feasible target of the proposed study.

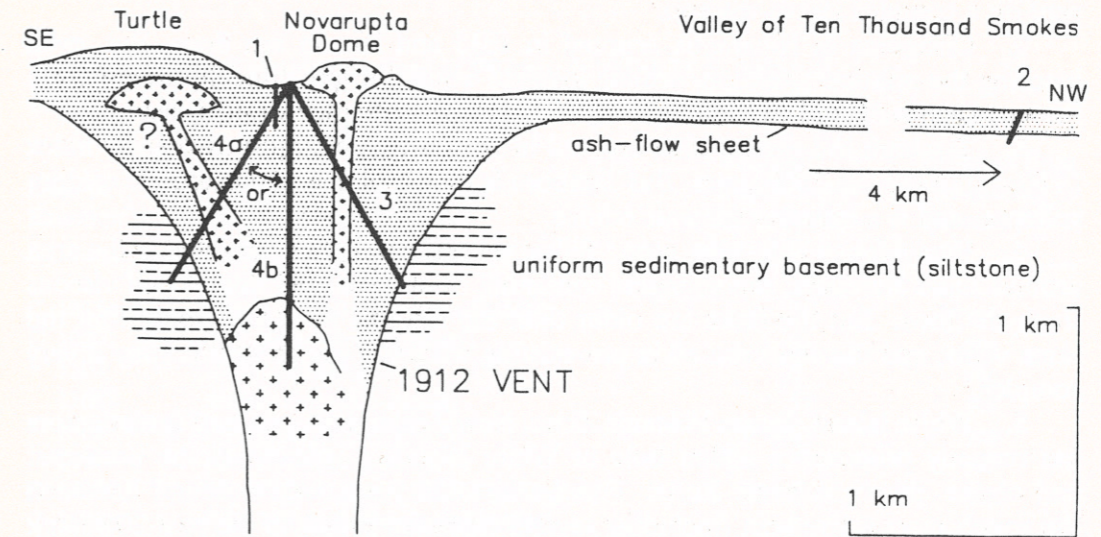


FIGURE 3 Schematic cross section of the vent and ash-flow sheet along a curved line containing the two drilling sites and the Turtle, illustrating geological objectives of the proposed holes. (After Eichelberger et al., 1988.)

2. Lack of Direct Observation and Study Prior to 1912. The Novarupta event was seen only at a distance. There was no eyewitness close enough to describe the eruptive stages that could thus be tied to the stratigraphy of the flow or the deposits in the vent. Nor was there any prior geophysical record of the area.

3. COMPARISON WITH OTHER AREAS

The drilling targets at Novarupta are the complete penetration of a young welded ash flow and the sampling of a simple young conduit to identify eruptive mechanisms and thermal behavior.

Therefore, in looking at possible alternative sites for the research, the panel has concentrated on relatively recent silicic eruptions with an explosivity index of 5 or more (Table 1) and has considered (1) size, (2) presence of an ash flow, (3) evidence of hydrothermal activity, and (4) simplicity.

Silicic volcanoes punctuate the landscape in many parts of the world, but most of these can be dismissed rather quickly as rival targets. For example, Santorini and Krakatau have collapsed summits that are partly submerged; Mont Pelée and Soufrière of St. Vincent are too small; Vesuvius and Aetna are too complex, etc. More suitable alternative sites and areas include the following:

1. Quizapu (Cerro Azul) in the Chilean Andes, which erupted in 1932. As described by Hildreth and Drake (1988), Quizapu erupted about 5 km³ of magma (=18 km³ of pumice) and has an ash flow. The flow, however, has a volume of only 0.01 km³ (minute as compared to Katmai), has almost certainly cooled to ambient

temperature, and is unlikely to have a welded zone. Moreover, Quizapu is a flank vent on a complex strato-volcano.

2. Cosigüina in Nicaragua erupted in 1835 and has an ash flow. But, even ignoring the political situation, drilling logistics would be very difficult, the eruption has not been well studied, and the eruption is from a complex strato-volcano.

3. Tambora in Lesser Sunda erupted in 1812 with the largest explosivity index (VEI=7) in the last 1000 years. But Tambora is now cool, has had extensive caldera collapse, and is a complex volcanic edifice.

4. East African Rift valley area.* Silicic volcanics have been erupted in the area around Lake Naivasha, the youngest consisting of 400-year-old domes and viscous trachytic flows. But the flows are older than the ash and have not come from the same vents, and the vents are all in pre-existing volcanics whose stratigraphy is very complex.

5. White Island, Taupo Volcanic Zone, New Zealand. A group of investigators has recently proposed a 600-m hole in White Island, a volcano at the northeast end of the Taupo Volcanic Zone. For the last 150 years, White Island has been the zone's most active vent (including several explosive events in the past 20 years). White Island has an extensive hydrothermal system, the operation of which is the chief target of the proposed drilling.

In comparison with the eruption at Katmai, White Island eruptions are small, and there are no welded ash flows; the vent itself is very complex and overprinted by many eruptions and recurrent hydrothermal activity. This is not to belittle the value of the proposed drilling. It would enhance our understanding of hydrothermal systems both as sources of geothermal power and as makers of metal ores. It would expand on but not substitute for the Katmai project. Indeed, if both Katmai and White Island are drilled, the value of the hydrothermal studies at both would be enhanced.

6. Mount St. Helens. Of all alternate sites, Mount St. Helens is probably the most attractive.

The possible advantages are as follows:

- Detailed documentation (geological and geophysical) both during and after the 1980 event.
- Pre-eruption geological and geophysical studies.
- Stratigraphy of the pyroclastics can be tied directly to eruption stages.
- A known active hydrothermal system.
- The magma chamber is directly below and could be investigated.

The disadvantages are as follows:

- Size—it is less than 5 percent of the size of Novarupta.
- Ash is a mixture of 1980 and earlier material (though they may be chemically distinct) and not welded.
- Complexity of the volcano.

*Information on East African Rift valley is from R.A. MacDonald, University of Lancaster.

TABLE 1 Global Volcanic Eruptions of VEI 5 to 7, 1000 A.D. to 1980 A.D.

Date of Eruption ^a	Volcano Name (location)	Volcanic Explosivity Index (VEI)	Eruption from Pre-existing Volcano ?
C 1015q	Billy Mitchell (Bougainville-SW)	5	yes
C 1020?	Tarawera (New Zealand)	5	yes
1104	Hekla (Iceland-S)	5	yes
1108?	Asama (Honshu-Japan)	5?	yes
1362	Oraefajokull (Iceland-S)	6	yes
1477?	Kverkfjoll (Iceland-S)	5	yes
D 1480	Mount St. Helens (U.S.-Washington)	5	yes
C 1580p	Billy Mitchell (Bougainville-SW)	6	yes
1640	Awu (Sangihe Is.-Indonesia)	5?	yes
1640	Komaga-Take (Hokkaido-Japan)	5	yes
C 1660p	Long Island (New Guinea-NE of)	6	yes
1663	Usu (Hokkaido-Japan)	5	yes
1667	Tarumai (Hokkaido-Japan)	5	yes
1707	Fuji (Honshu-Japan)	5	yes
1739	Tarumai (Hokkaido-Japan)	5	yes
1755	Katla (Iceland-S)	5	yes
1812	Tambora (Lesser Sunda Is.)	7	yes
1822	Galunggung (Java)	5	yes
1835	Cosigüina (Nicaragua)	5	yes
1854	Sheveluch (Kamchatka)	5	yes
1875	Askja (Iceland-N)	5	yes
1883	Krakatau (Indonesia)	6	yes
1886	Tarawera (New Zealand)	5	yes
1902	Santa Maria (Guatemala)	6	yes
1907	Ksudach (Kamchatka)	5	yes
1912	Novarupta (Alaska Peninsula)	6	no
1932	Cerro Azul [Quizapu] (Chile-C)	6	yes
1955	Bezymianny (Kamchatka)	5	yes
1980	Mount St. Helens (U.S.-Washington)	5	yes

^aC designates carbon-14 date; D, dendrochronology (tree ring) date; q, ±25-year uncertainty; p, ±20-year uncertainty.

SOURCE: Data from Simkin et al. (1981).

- As a National Monument, Mount St. Helens is subject to the same constraints on potentially disruptive activities as Novarupta.

As can be seen from these examples of alternative targets, most possible sites fail to match Katmai in at least two of its advantageous features. Most importantly, all fail the test of simplicity. Table 1, derived from the data bank of the Smithsonian Institution, lists all known large explosive eruptions (VEI=5 or more) since 1000 A.D. and shows that only Novarupta came from a pristine vent. All others came from and through pre-existing volcanic structures. Therefore, only Katmai can claim freedom from overprinting and can demonstrate that all the effects of the eruption and thermal activity derive from a single event.

4. SUMMARY AND CONCLUSION

The Novarupta vent area at Katmai offers five advantageous features: (1) size (15 km³); (2) youth (not modified by erosion and still hot); (3) documented ongoing hydrothermal activity including metal transport; (4) shallow depths to critical horizons; and (5) simplicity (eruption through unaltered sediments and apparently simple subsidence of the summit).

Of these factors, simplicity is of overriding importance, because it ensures that all chemical alterations are the result of one event acting on unaltered nonvolcanic country rock and single-event eruptive rocks and because it will enable a more definitive interpretation of the vent composition and structure.

A canvass of other explosive volcanoes of the world shows none that can match all the features of Novarupta. Most important, no other recent eruption has blasted a vent through previously unaltered rock.

The panel therefore concludes that the authors of the proposal are correct in maintaining that the Katmai area is uniquely suited to the proposed research and is an excellent target "for a research drilling investigation of silicic magmatic processes."

SELECTED REFERENCES

- Eichelberger, J.C., Hildreth, W., and Papike, J.J., 1988. Direct observation of a young igneous system: a science plan for research drilling at Katmai, Alaska. Unpublished. 218 pp.
- Fenner, C.N., 1950. The chemical kinetics of the Katmai eruption, *Am. J. Sci.*, 248, 593-627.
- Gigenbach, W.F., Hedengurst, J.W., Houghton, B.F., Otway, P.M., and Allis, R.G., 1989. Research drilling into the volcanic hydrothermal system on White Island, New Zealand, *EOS*, vol. 70, pp. 98-108.
- Griggs, R.F., 1918. The eruption of Katmai, *Nature*, 101, pp. 497-509.
- Hildreth, W., 1983. The compositionally zoned eruption of 1912 in the Valley of Ten Thousand Smokes, Katmai National Park, Alaska, *J. Volcanol. Geotherm. Res.*, vol. 18, pp. 1-56.

- Hildreth, W., and Fierstein, J., 1986. Near-vent ejecta around Novarupta, eruption of 1912, Katmai National Park, Alaska (abs.), *EOS*, vol. 67, no. 44, p. 1246.
- Hildreth, W. and Drake, R.E., 1988. The eruption of Volcan Quizapu, Chilean Andes (abs.), *Geol. Soc. Amer. 1988 Meeting, Abstracts with Program*, p. A7.
- McClelland, L., Simkin, T., Summers, M., Nielsen, E., and Stein, T.C., 1989. Global Volcanism 1975-1985: The First Decade of Reports from the Smithsonian Institution's Scientific Event Alert Network (SEAN), Prentice-Hall/American Geophysical Union, 655 pp.
- Simkin, T., Siebert, L., McClelland, L., Bridge, D., Newhall, C., and Latter, J.H., 1981. *Volcanoes of the World*, Hutchinson-Ross Publ. Co., Stroudsburg, Pennsylvania, 232 pp.
- Simkin, T., and Siebert, L., 1984. Explosive eruptions in time and space, in *Explosive Volcanism: Inception, Evolution, and Hazards*, National Academy Press, Washington, D.C., pp. 110-121.
- Zies, E.G., 1929. The Valley of Ten Thousand Smokes: I. The fumarolic incrustations and their bearing on ore deposition. II. The acid gases contributed to the sea during volcanic activity, *Nat. Geogr. Soc. Contr. Tech. Papers, Katmai Ser. 4*, pp. 1-79.