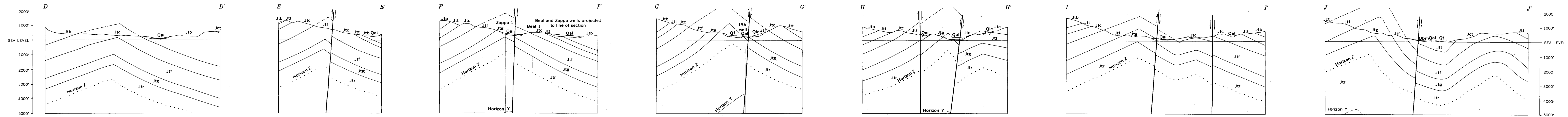


A. INTERPRETED STRUCTURE CONTOURS ON TOP OF THE UPPER THICK SANDSTONE UNIT OF THE RED GLACIER FORMATION (HORIZON Z). TOP OF THE SANDSTONE UNIT ABOUT 1000 FEET BELOW THE TOP OF FORMATION

B. INTERPRETED STRUCTURE CONTOURS ON TOP OF UPPER ZONE OF OIL AND GAS SHOWS IN IBA WELL JUST BELOW A DEPTH OF 4700 FEET (HORIZON Y). HORIZON Y IS APPROXIMATELY 4200 FEET STRATIGRAPHICALLY BELOW THE TOP OF RED GLACIER FORMATION

C. INTERPRETED STRUCTURE CONTOURS ON TOP OF THE TALKEETNA FORMATION. CONTOURS BASED ON ASSUMPTION OF LITTLE OR NO RELIEF ON THE UNCONFORMITY BETWEEN THE MIDDLE AND LOWER JURASSIC



1 1/2 0 1 MILE
APPROXIMATE SCALE OF CROSS SECTIONS

MAPS AND SECTIONS SHOWING INTERPRETATION OF STRUCTURE AND STRATIGRAPHY OF FITZ CREEK ANTICLINE, INISKIN PENINSULA, ALASKA

SCALE 1:63 360
1 0 1 2 3 MILES
1 0 1 2 3 KILOMETERS

Note: The three structure contour maps on this translucent overlay are designed to be used with the geologic map on plate 1