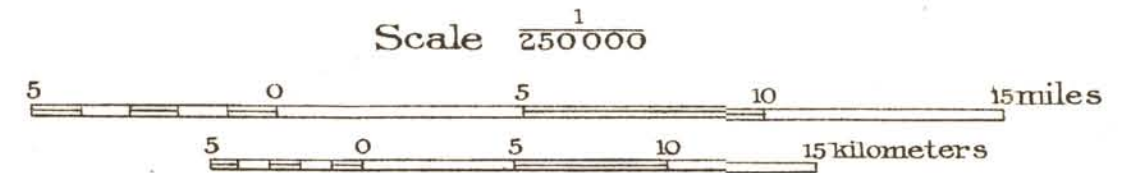
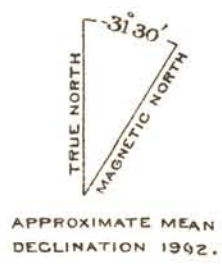


# TOPOGRAPHIC RECONNAISSANCE MAP OF HEADWATER REGIONS OF COPPER, NABESNA, AND CHISANA RIVERS, ALASKA.

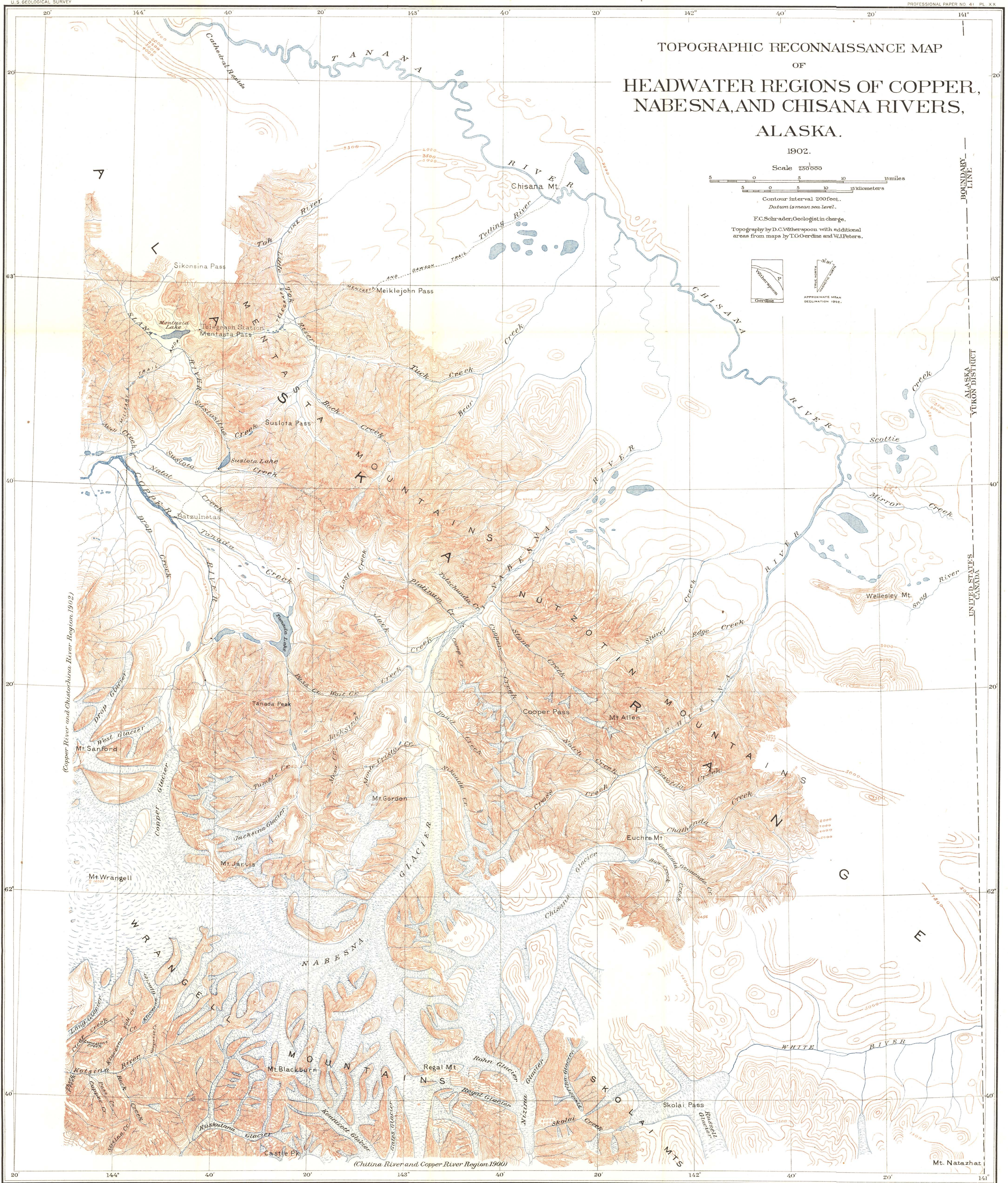
1902.



F.C. Schrader, Geologist in charge.  
Topography by D.C. Witherspoon with additional  
areas from maps by T.G. Gerdine and W.J. Peters.



BOUNDARY LINE  
ALASKA  
YUKON DISTRICT  
UNITED STATES  
CANADA



Copper River and Chisana River Region, 1902

(Chitina River and Copper River Region, 1900)