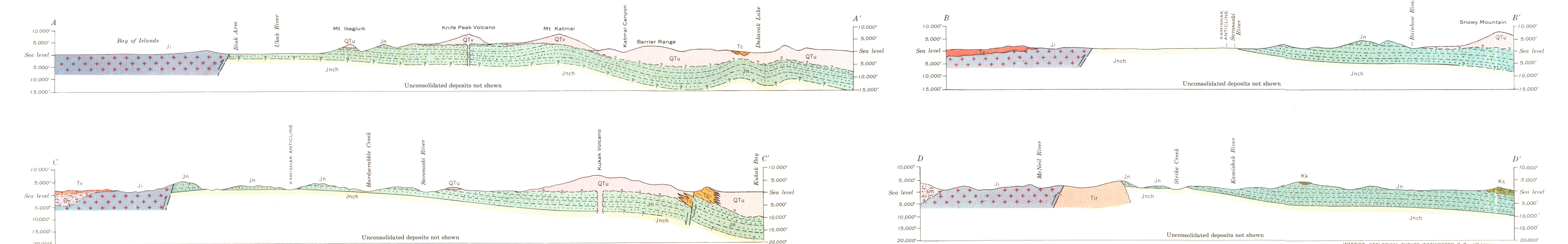
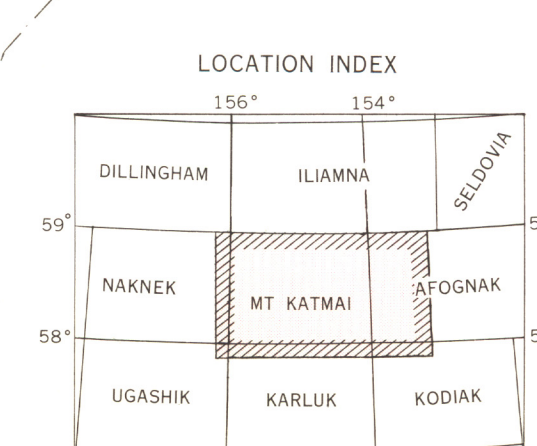


EXPLANATION

Qt	Tuff Deposited during early phase of 1912 Mount Katmai eruption	Qd	Undifferentiated surficial deposits Predominantly alluvial and glacial gravel; locally includes silt and pebble deposits, Pleistocene and Recent	—	Contact Dashed where approximately located; queried where inferred
Qv	Volcanic rocks Chiefly andesite and basalt	Qv	Igneous rocks, undifferentiated Locally includes siliceous and mafic intrusive rocks and Kenai formation equivalent	—	Fault, showing relative movement Dashed where approximately located; queried where doubtful. U, upthrown side; D, downthrown side
Ti	Intrusive rocks	Tc	Coal-bearing rocks Probably equivalent to Kenai formation	—	Anticline Showing trace of axial plane and plunge of axis. Dashed where approximately located; queried where inferred
Tv	Volcanic rocks Chiefly andesite and basalt, locally interfingers with continental sedimentary rocks. May include some Pliocene rocks	UNCONFORMITY	UNCONFORMITY	—	Syncline Showing trace of axial plane. Dashed where approximately located; queried where doubtful
UNCONFORMITY	UNCONFORMITY	Kk	Kaguyak formation	—	Strike and dip of beds Based on field measurement
Jn	Jn	UNCONFORMITY	UNCONFORMITY	—	Strike and approximate dip of beds Based on interpretation of photographs
Jn	Jn	Jn	Naknek formation Includes Chitik conglomerate member, Jnch, at base	—	Horizontal beds
Ji	Ji	UNCONFORMITY	UNCONFORMITY	—	Lateral, terminal, and recessional moraines
Ji	Ji	UNCONFORMITY	UNCONFORMITY	—	Location of measured section
sm	Sedimentary and (or) metamorphic rocks, undifferentiated Older than Middle Jurassic	+	+	—	Location of fossil collection
		+	+	—	Reported gas seeps
		—	—	—	Path of glacier
		•	•	—	Campsite (1954)



GEOLOGIC MAP AND STRUCTURE SECTIONS IN THE MOUNT KATMAI AREA, ALASKA

Scale 1:250,000
Contour interval 200 feet
Dotted lines represent half-interval contours
Areas not surveyed in detail indicated by broken lines
Datum is mean sea level

1958 magnetic declination at south edge of map area varies from 21' to 22' E

INTERIOR GEOLOGICAL SURVEY, WASHINGTON, D. C. 20540
Geology mapped by A. S. Keller and H. N. Reiser, 1954; W. J. J. and R. K. K., 1953; W. R. Smith, 1923; K. F. Mather, 1923; and R. W. Stone (in W. W. Atwood, 1911). Photogeology by A. S. Keller and H. N. Reiser, 1955