

EXPLANATION

Qd
Dune sand
Chiefly in beach ridges

Qal
Alluvium, eluvium, and talus

RECENT COMPOSITE BASALTIC CONES

MOUNT CERBERUS
Qbc₁ Qbc₂
Qbc
Basalt
Lava flows in part separately mapped and numbered in probable order of eruption

LAKESHORE CONE
Qbl₂ Qbl₁
Qbl
Basalt

SUGARLOAF PEAK
Qbs₁
Qbs
Basalt

EARLY POSTCALDERA CONE
Qbt
Basaltic tuff-breccia and tuffaceous sand with minor basaltic flows

LATE PLEISTOCENE BASALTIC CONES
Qlp
Lava flows and pyroclastic rocks
Later than or interbedded with dacitic pumice of caldera eruption, largely from Anvil Peak, but also from 914-foot cone near Tuman Head and Threequarter Cone on west rim of caldera

EARLY SUBSIDIARY CONES
QTpl QTp
Pyroclastic rocks and lava flows
Listed clockwise from north: North Head Double Cone, Perret Ridge, north tip Fenner Lake, Ragged Top, 1105-foot cone, 1389-foot cone, Tuman Head younger, Tuman Head older. Crystalline vent plugs of cones, QTp

OLD VOLCANO
QTpo
Pochnoi volcanics
Tuff-breccia, lava flows, and agglomerate, largely basaltic, of shield-shaped volcano. Locally sandstone from reworked pyroclastic deposits

Not mapped is widespread blanket of basaltic ash from both Mount Cerberus and Sugarloaf eruptions, and thick deposits of pumiceous dacitic ash interbedded in part in late Pleistocene basaltic cones and lying on rocks of older formations

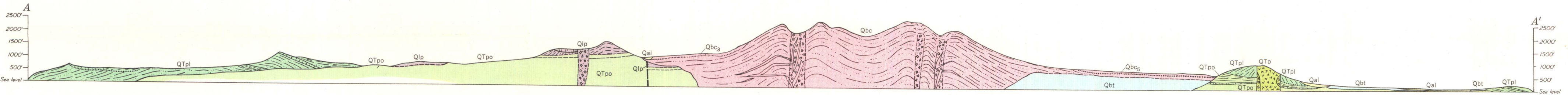
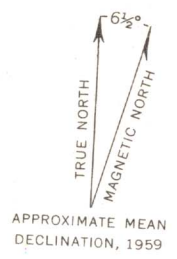
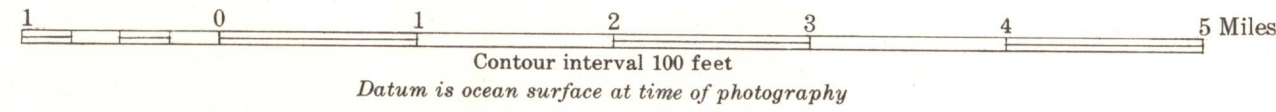
--- Contact
Dashed where approximately located

Recent
Pleistocene

QUATERNARY
TERTIARY (?) OR QUATERNARY

Base from U. S. Army, Semisopchnoi Island, 1:25 000, 1943
Grid modified from 1000 yard grid, Corps of Engineers, U. S. Army, 1:25 000 scale maps of Semisopchnoi Island, 1943

Geology by Robert R. Coats, 1947



GEOLOGIC MAP AND SECTION OF SEMISOPCHNOI ISLAND, ALEUTIAN ISLANDS