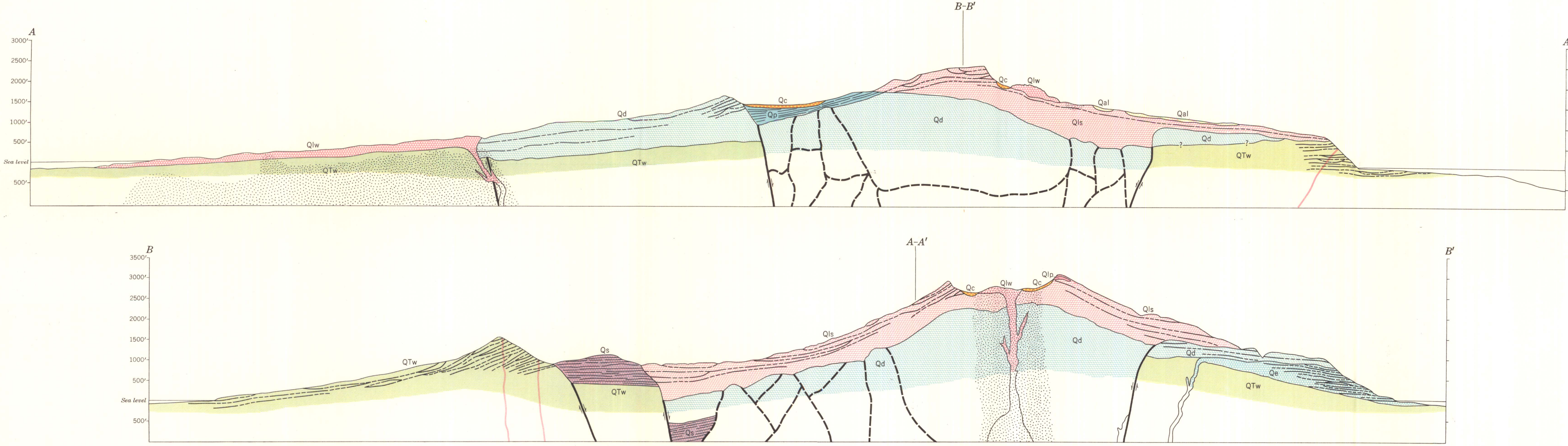


Topography from U. S. Coast and Geodetic Survey Topographic Manuscript T-8256, Universal Transverse Mercator Projection, Zone 60, 1927 North American datum

INTERIOR-GEOLOGICAL SURVEY, WASHINGTON, D. C. 20515

Geology by G. L. Snyder and R. A. Robie, 1951



**GEOLOGIC MAP AND SECTIONS OF LITTLE SITKIN ISLAND, ALASKA**

