

EXPLANATION
A BLANKET OF WELL-BEDDED BASALTIC ASH COVERS MOST OF THE AREA TO DEPTHS OF AS MUCH AS 7 FEET, BUT IS NOT SHOWN ON THE MAP

Qa
Alluvium, beach gravel, and water-sorted pumice deposits

Qkb
Historic and late prehistoric basalt flows from Kanaga Volcano

Qva
Older volcanic rocks of Kanaga Volcano
Includes basalt and andesite flows, scoria, and tuff breccia, Qkv; vent agglomerate and minor intrusive rocks of later stage, Qva

UNCONFORMITY
Qat
Andesite tuff

UNCONFORMITY
Qts
Basalt flows and tuff breccia from ancient vent near west coast
Qtk
Olivine basalt flows from ancient vent near Round Head

UNCONFORMITY
Tkb
Olivine and hypersthene basalt and andesite flows of ancient Mt. Kanaton

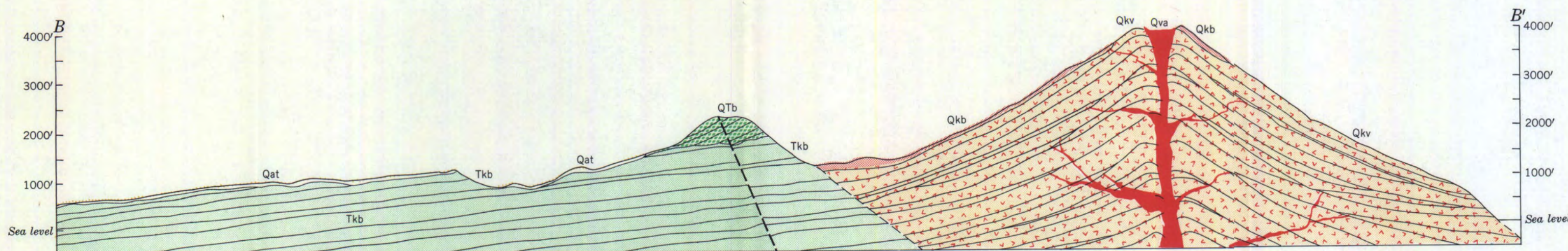
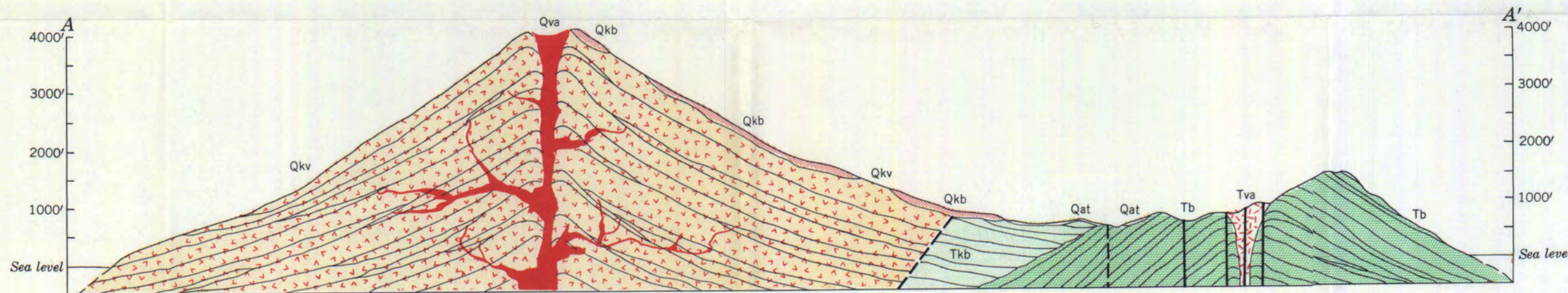
UNCONFORMITY
Tva
Basalt dome
Tvb
Agglomerate in vent older than Mt. Kanaton near north coast

Tb
Basalt flows and tuff beds from vent older than Mt. Kanaton near north coast

Strike and dip of beds
Contact, dashed where inferred
Fault, dashed where inferred

QUATERNARY

TERTIARY



Topography and grid from maps compiled by
Corps of Engineers, U. S. Army, 1943

Geology by R. R. Coats, 1946

GEOLOGIC MAP OF NORTHERN KANAGA ISLAND, ALASKA

