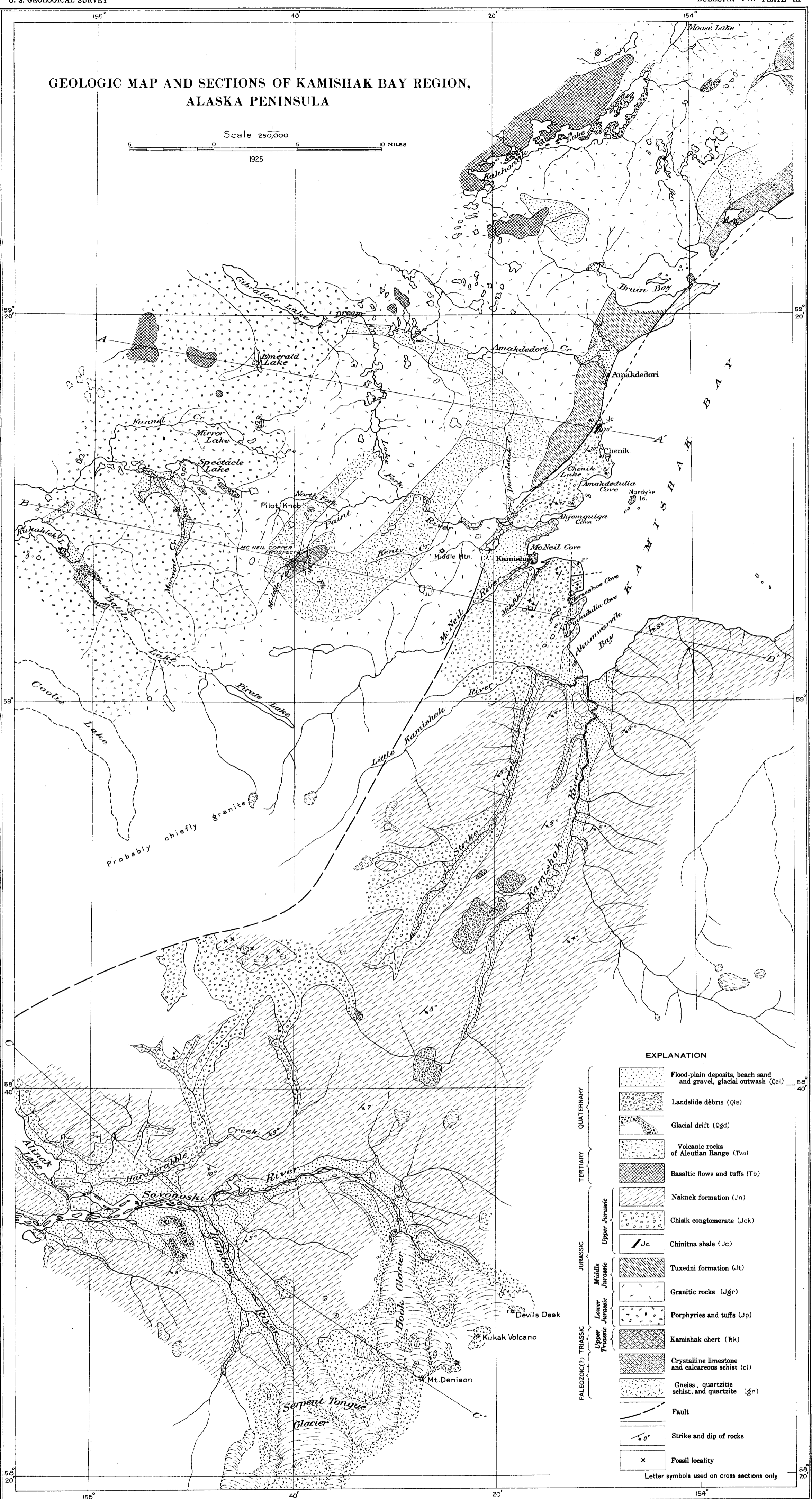


# GEOLOGIC MAP AND SECTIONS OF KAMISHAK BAY REGION, ALASKA PENINSULA

Scale 250,000  
1925



### EXPLANATION

	Flood-plain deposits, beach sand and gravel, glacial outwash (Qal)
	Landslide debris (Qls)
	Glacial drift (Qgd)
	Volcanic rocks of Aleutian Range (Tva)
	Basaltic flows and tuffs (Tb)
	Naknek formation (Jn)
	Chisik conglomerate (Jck)
	Chinitna shale (Jc)
	Tuxedni formation (Jt)
	Granitic rocks (Jgr)
	Porphyries and tuffs (Jp)
	Kamishak chert (Rk)
	Crystalline limestone and calcareous schist (cl)
	Gneiss, quartzitic schist, and quartzite (gn)
	Fault
	Strike and dip of rocks
	Fossil locality

Letter symbols used on cross sections only

Base from U.S. Geological Survey topographic maps Surveyed by R.H. Sargent, 1923

Geology by Kirtley F. Mather

